



**Drain:** John OSBORN **Drain #:** 162  
**Improvement/Arm:** 106<sup>TH</sup> : TOWNE RD RECONSTRUCTION  
**Operator:** D. LINDGREN **Date:** 5-13-04  
**Drain Classification:** Urban/Rural **Year Installed:** 2003

### GIS Drain Input Checklist

- Pull Source Documents for Scanning
- Digitize & Attribute Tile Drains
- Digitize & Attribute Storm Drains
- Digitize & Attribute SSD
- Digitize & Attribute Open Ditch
- Stamp Plans
- Sum drain lengths & Validate
- Enter Improvements into Posse
- Enter Drain Age into Posse
- Sum drain length for Watershed in Posse
- Check Database entries for errors


---


---



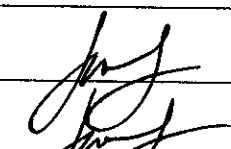
---



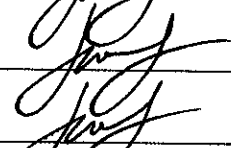
---



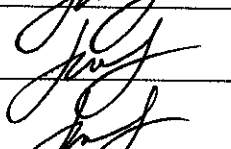
---

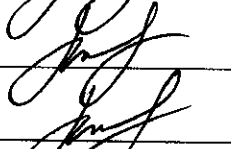

---



---


---


---


---

Gasb 34 Footages for Historical Cost  
Drain Length Log

Drain-Improvement: JOHN OSBORN - 106<sup>TH</sup> & TOWNE RD RECONSTRUCTION

Drain Type:	Size:	Length	Length (DB Query)	Length Reconcile	Price:	Cost:
CONC. BOX CULVERT	106" X 47"	335'	335'		348. <sup>75</sup> /ft	116,831. <sup>25</sup>

Sum: 335'    335'    \$ 116,831.<sup>25</sup>

Final Report: \_\_\_\_\_

Comments:

EXACT MEASUREMENTS IN FEET & INCHES FOR BOX CULVERT DIMENSIONS WERE: 8' 9.96" X 3' 11.04" PRICING FOR 9' X 4' BOX CULVERT WAS USED TO CALCULATE COST.



Kenton C. Ward, Surveyor

Phone (317) 776-8495

Fax (317) 776-9628

Suite 188

One Hamilton County Square  
Noblesville, Indiana 46060-2230

### Map Correction-Field Verification

Drain Number: #162

Drain Length: 3973 FT.

Drain Name: John Osborn

Change +/-: -15 FT.

Date: 7-28-03

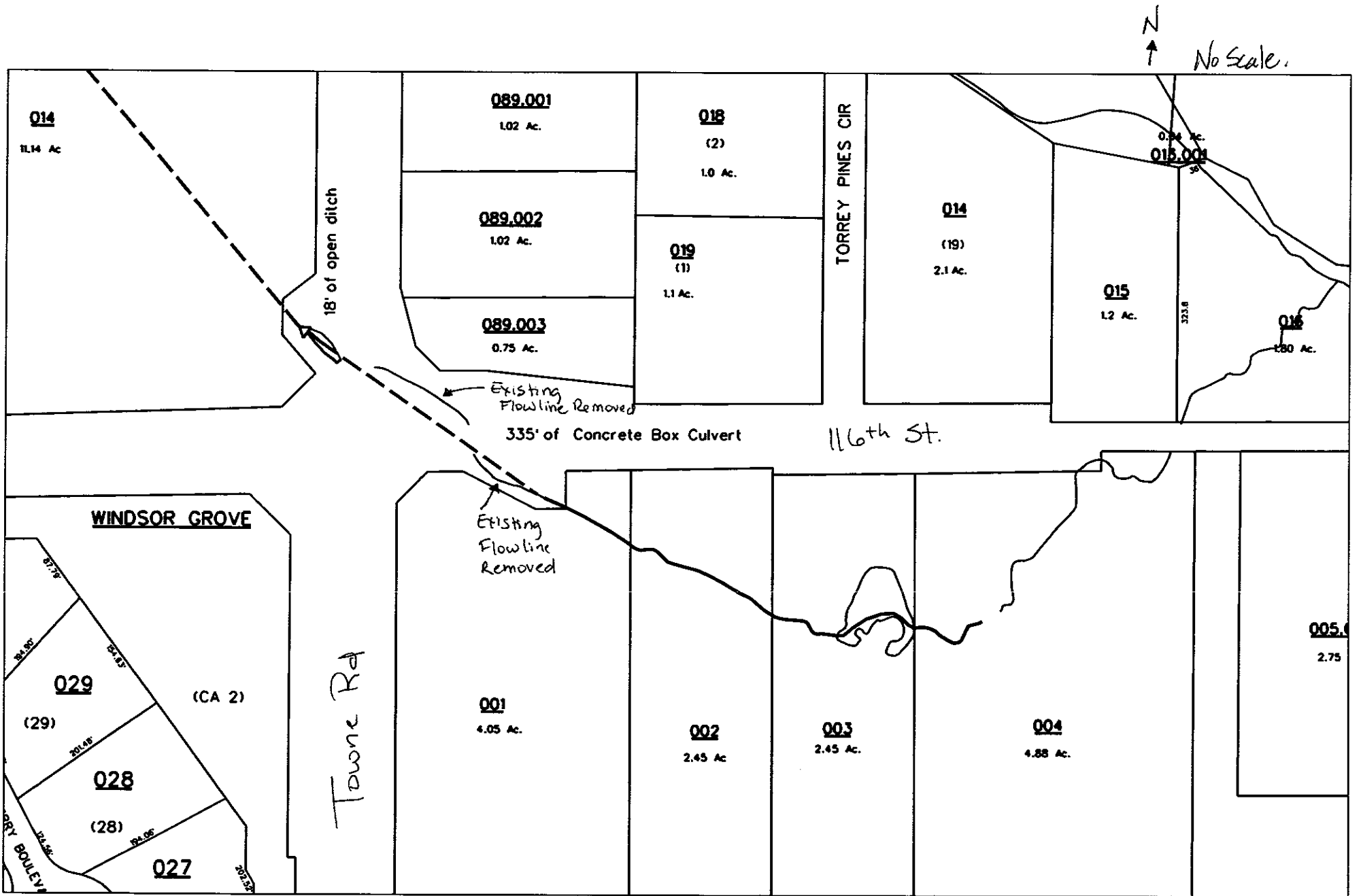
New Length: 3958 FT.

Verified By: Suzanne L. Mills

Notes & Sketch: See attached.

With the improvements at 106<sup>th</sup> & Towne, the John Osborn drain was straitened across the intersection and inclosed in a box culvert. This resulted in the removal of 350' FT of open ditch. This was replaced with 335' FT. of 106" x 48" concrete box culvert. Therefore, there was a loss of 15' FT to the length of the John Osborn regulated drain.

Suzanne L. Mills  
GIS Specialist



N  
↑  
No Scale.

reg\_drain\_hc.dgn 7/29/2003 3:19:02 PM